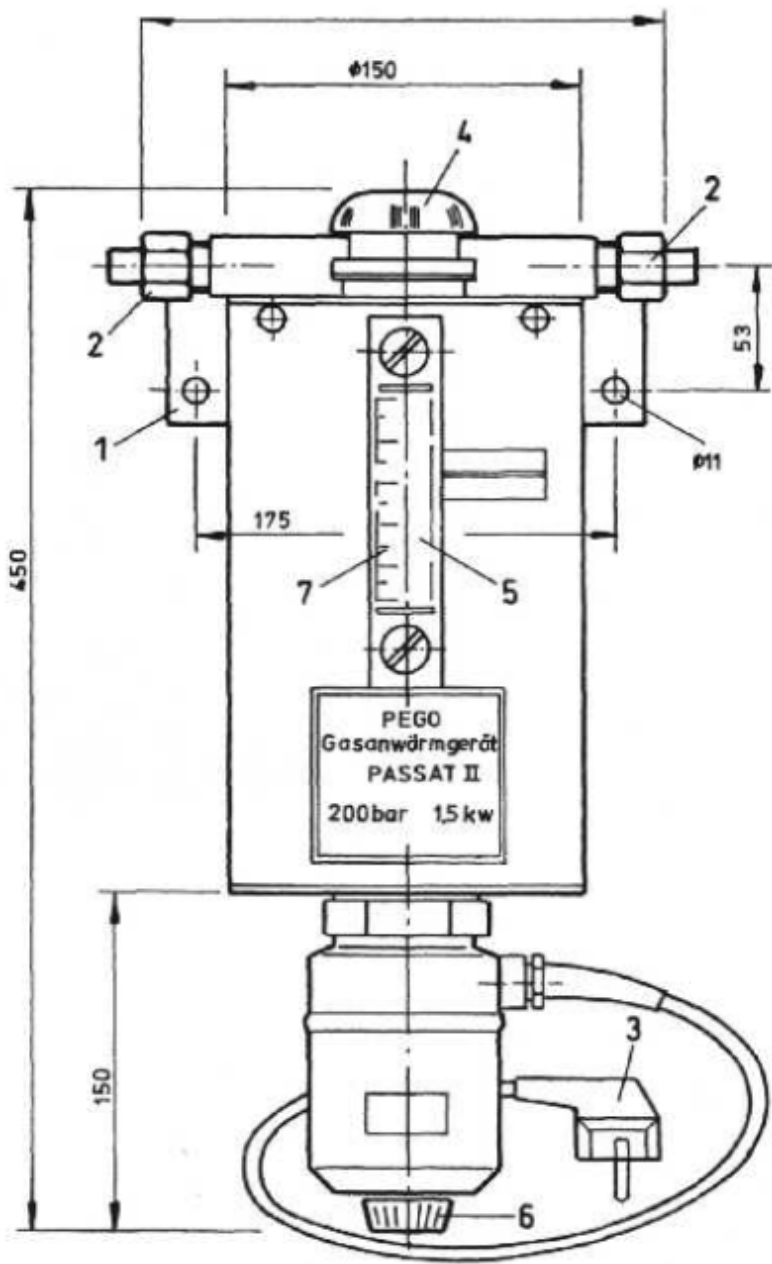


Gas warmer Passat II



Model	Gas type	Inlet pressure P1	Flow Q1	Heating power	In & outlet connections	Voltage	Max. heating fluid
Passat II	NF, NC	max. 200 bar	max. 420 m³/h	35 - 80° C / 1,5 kW	G 1/2 DIN EN 560 with solder nipple	230 V	3,25 l

With the gas warmer Passat II, non-aggressive and non-flammable gases pre-heated.
Gas can at low ambient temperatures and high flow rates can cause the piping and regulator to ice up.
This is prevented by the Passat II. Materials in contact with medium: Aluminium, copper and brass.

QUALITY STANDARD

The company Hornung is certified to **DIN EN ISO 9001** and **ISO 14001:2009**. All single parts are manufactured, assembled and tested by in-house production. The finished parts are therefore under all criteria of German quality control with 100% final inspection.